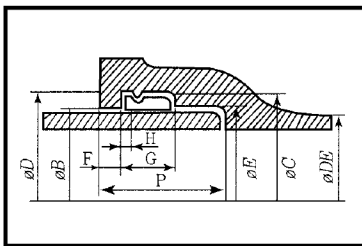
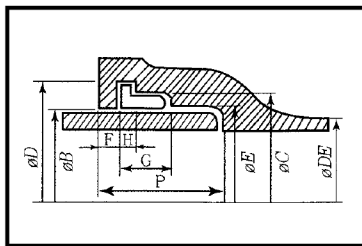


5) 타이트 조인트관의 소켓



Ø600 이하



Ø700 이상

단위: 치수mm, 무게kg

호칭 지름 (DN)	DE		B		C	D	E	F	G	H	P	소켓 무게 (약)
80	98	+1.0 -3.0	100.5	+1.5 -1.0	119.1	123.0	103.5	12	40	6	84	5.2
100	118		120.5		139.0	143.0	123.4	12	40	6	88	6.7
125	144		146.5		164.8	169.0	149.4	12	40	6	91	8.6
150	170	+1.0 -3.5	172.5	+2.0 -1.0	190.7	195.0	175.3	12	40	6	94	10.7
200	222		224.5		245.2	250.0	227.8	15	45	7	100	14.9
250	274		276.5		296.9	301.5	279.7	15	47	7	105	21.0
300	326	+1.0 -4.0	328.5	+2.5 -1.0	351.7	356.5	332.1	17	50	8.5	110	26.5
350	378		380.5		403.4	408.0	383.8	17	50	8.5	110	32.6
400	429		431.5		457.2	462.0	435.8	19	55	9.5	110	37.2
450	480	+1.0 -4.5	482.5	+3.0 -1.0	507.9	513.0	486.7	19	55	9.5	120	49.3
500	532		534.5		562.6	568.0	539.4	21	60	11	120	55.1
600	635		637.5		668.0	673.4	642.6	21	65	12	120	71.2
700	738	+1.0 -5.0	742	+3.5 -1.0	777	795	751	17	74	16	155	70.0
800	842		846		881	899	855	17	74	16	160	85.7
900	945		949		984	1002	958	17	74	16	175	107.6
1000	1048	+1.0 -7.0	1052	+4.0 -1.0	1091	1111	1061	19	84	16	185	137.8
1100	1144		1148		1187	1207	1157	19	84	16	200	163.2
1200	1255		1259		1298	1318	1268	19	84	16	215	197.3
1400	1462	+1.0 -8.0	1466	+1.0 -9.0	1511	1535	1476	23	101	21	249	306.9
1600	1668		1672		1719	1743	1682	24	104	21	275	410.8
1800	1875		1879		1930	1954	1889	25	118	26	305	554.5
2000	2082	+1.0 -10.0	2086		2142	2166	2096	27	126	26	335	736.4

※ 현재 생산 가능 규격은 80mm~1200mm입니다.